


SEPHA ENERGIES

Execution. Innovation. Local Impact.



COMPANY PROFILE

 www.sephaenergies.com

The Transition

Sepha Energies was born out of a strategic decision to scale, structure, and reposition for long-term growth. After years of building a competitive presence through Noranova Resources Company Limited, we recognized the need to evolve into a platform capable of attracting institutional financing, deepening local content capacity, and driving innovation at scale.

As part of this evolution, Noranova Resources now operates as a business unit under the Sepha corporate structure, continuing to execute projects with the same technical excellence, while benefiting from the governance, structure, and strategic clarity that Sepha provides.



SEPHA ENERGIES

Together, we are delivering energy and raising the standard.

Executive Summary

At Sepha Energies Limited, we are building more than a service company, we are establishing a structured, investor-ready platform designed to deliver scalable, execution-driven upstream solutions across Nigeria and the West African region.

Sepha Energies was founded with a bold vision: to access long-term financing, scale operations, drive technology adoption, and deepen Nigeria's local content capacity.

It reflects the evolution of a leadership journey committed to delivering world-class energy services anchored in structure, discipline, and measurable impact.

We are led by a multidisciplinary team with over 50 years of combined experience in field operations, technical service delivery, and executive leadership supported by a proven track record of successful project execution and global industry collaboration across Nigeria and Sub-Saharan Africa.

As part of our growth strategy, Sepha maintains Nigeria-based inventory of long-lead oilfield equipment, enabling rapid mobilization and eliminating costly delays. This initiative is central to our broader mission: enhancing local content, accelerating service delivery, and supporting national development through job creation and in-country value.

At Sepha, we believe true industry leadership is built on structure, innovation, and execution. We are proud to serve as a trusted partner to clients, OEMs, and stakeholders across the oil and gas ecosystem and we welcome you to join us on this journey.

Sepha Energies Limited .
Build to Execute. Driven to Deliver

Our Vision

To be Africa's most trusted indigenous energy solutions company, delivering upstream excellence through innovation, local capacity, and a performance driven culture.

Our Mission

To provide world class drilling, evaluation, completion, production and intervention services across the upstream oil and gas sector, while advancing local content, integrating global technologies, and building a sustainable platform for long term growth and impact.

Our Strategic Goal

■ Deliver World Class Execution

Consistently exceed client expectations through structured service delivery, technical precision, safety and operational reliability.

■ Strengthen In Country Capability

Invest in Nigerian infrastructure, talent, and inventory to improve speed, access, and reliability

■ Build Strategic Global Alliances

Partner with OEMs and global leaders to localize advanced technologies and expertise.

■ Operate with Governance and Discipline

Build a scalable, investor ready company with strong compliance, structure, and leadership.

■ Drive Inclusion and Impact

Empower women, youth, and communities through education, job creation, and CSR initiatives.

■ Position Nigeria as a Regional Service Hub

Make Sepha a model for indigenous excellence and regional competitiveness in West Africa.

Board Of Directors



Mrs. Sandra Ekpe Agho
MD/CEO

Sandra Ekpe Agho is a seasoned petroleum engineer, energy entrepreneur, and advocate for inclusive leadership in Africa's oil and gas industry. With over 15 years of experience, she leads Sepha Energies Limited, a fast-growing indigenous company delivering advanced upstream services in drilling, formation evaluation, wellbore construction, completions, and interventions.

She also oversees Noranova Resources Company Limited, now operating under Sepha's corporate structure, contributing to upstream service delivery and technical partnerships. Sandra began her career at Baker Hughes, working across Nigeria and the U.S., where she built deep technical and field expertise. She holds a B.Sc. in Mathematics/Computer Science, a PGD and M.Sc. in Petroleum Engineering, and is pursuing a Ph.D. in Petroleum Engineering.

In 2024, Sandra launched Sepha Energies to restructure and scale her operations under a unified, investor-ready platform focused on capital efficiency, execution, and local content

growth. She is also championing the establishment of long-lead oilfield equipment inventory in Nigeria to reduce procurement timelines and boost project delivery speed.

Sandra's leadership is grounded in technical rigor, strong governance, and disciplined execution. She has built strategic alliances with global service companies while driving local value creation, job opportunities, and industry capacity development.

Beyond business, she is a UN Global Ambassador for GEPS, Rivers State Chairperson of WEOG, and founder of the NurtureHer STEM Development Initiative and iBelieve Outreach Network, both focused on empowering young girls and communities through STEM education, mentorship, and grassroots engagement.

Widely respected for her strategic clarity and systems-oriented leadership, Sandra integrates faith, excellence, and vision in all she does, building sustainable structures and raising the next generation of energy leaders.

Board Chairman



Mr. Mansaray Abraham
Chairman

Executive Directors



Mr. Solomon Eshemogie
Chief Operating Officer
17yrs Experience



Mr. Nathan Obute
Chief Financial Officer
18yrs Experience

Non-Executive Directors



Mrs. Edna Asobi
ESG & Sustainability



Mrs. Efe Osazuwa
Commercial Strategy & Business
Development



Dr. Judith Adeniji
Legal, Governance &
Compliance



Ms. Victoria Emeya
External Relations &
Stakeholder Engagement



Mr. David Agho
Finance and Investment Strategy



Dr. Phillip Ekpe
International Strategy &
Partnerships

Management Team

Our strength lies in our people. We are led by a multidisciplinary leadership team with over 50 years of combined experience spanning upstream operations, technical service delivery, project execution, finance, and strategic management.

Our leadership combines field-tested expertise with boardroom discipline, united by a shared vision to scale indigenous capacity, drive execution excellence, and raise the standard of oilfield service delivery in Nigeria and the broader Sub-Saharan African region.



Uwax Oshionwu
Operations Manager
Experience 14 Years



Alexander Obi
Sales Manager
Experience 12 Years



Emmanuel Akogwu
Finance Manager
Experience 14 Years



Greg Aguveso
Technical Service Coordinator
- DD/LWD/MWD/WL -
Experience 18 Years

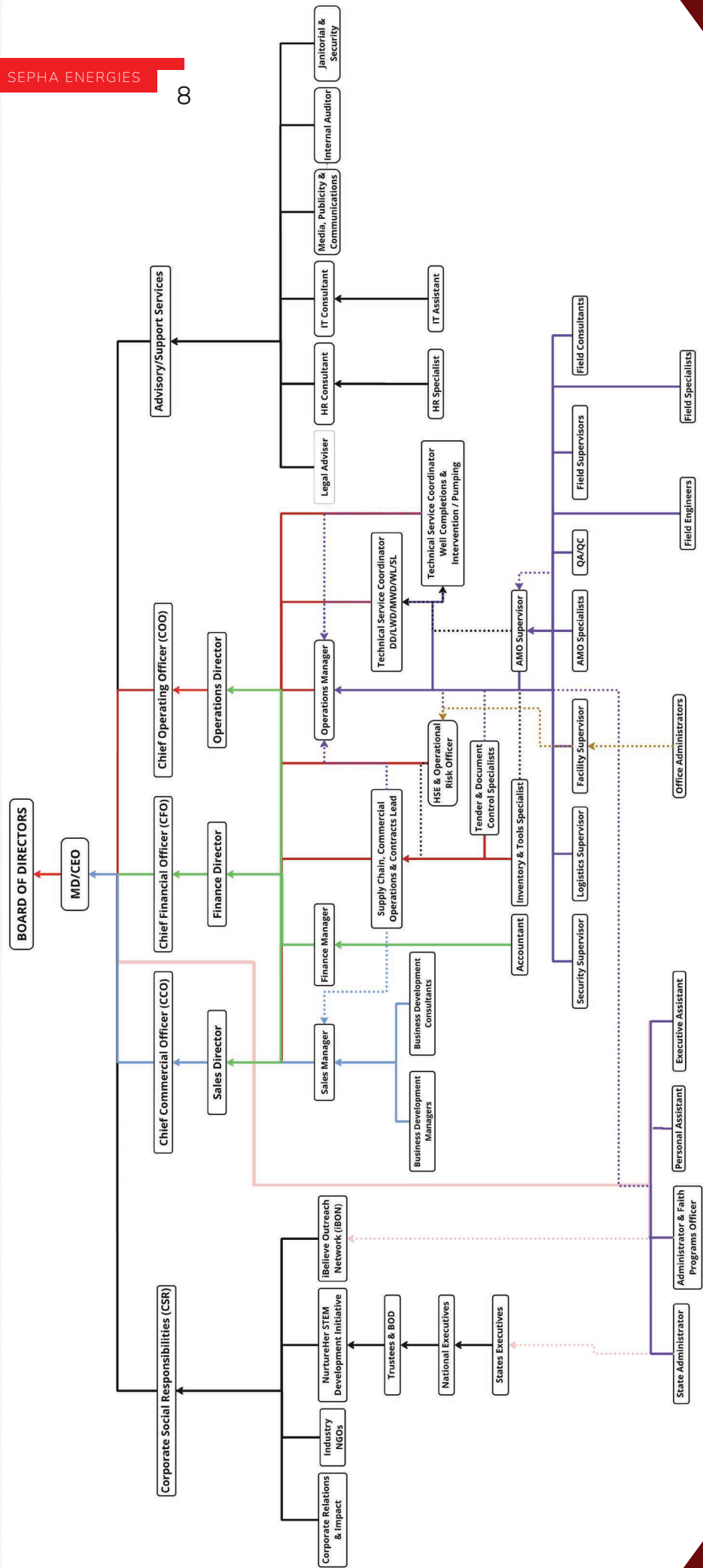


Chukwudalu Ekwue
Technical Service Coordinator
- WELL COMPLETION & INTERVENTION -
Experience 5 Years



Ini Jonah
Head, Supply Chain & Contracts
Experience 10 Years

Our Organogram



Products and Services

We deliver execution driven, technically sound upstream oilfield services designed to support operators across Nigeria and Sub-Saharan Africa. Our solutions are built on precision, reliability, and structured delivery. We help clients reduce downtime, improve well performance, and achieve project success.

Our strength lies not only in our multidisciplinary team but also in the capabilities of our global technical partners and access to financing that enables seamless service execution. This unique combination allows us to bridge the gap between operator requirements and technology deployment, ensuring faster mobilization, timely delivery, and measurable results.

1

Directional Drilling/LWD/MWD

2

Well Completion and Intervention

3

Wireline Logging & Perforation

4

Gravel Pack Pumping

5

Plug & Abandonment

6

Procurement

Backed by strong OEM alliances and supported by in-country inventory of long lead equipment, Sepha Energies is positioned to execute with speed, technical depth, and commercial flexibility.

Our Technical Partners & Alliances

We believe that excellence in service delivery is anchored in strong technical partnerships, shared standards, and strategic collaboration. We have built alliances with globally recognized Original Equipment Manufacturers (OEMs) and technology providers to ensure our clients receive the highest quality solutions backed by proven engineering expertise.

Partnerships Offerings:

- Deploy reliable and field tested technologies
- Maintain access to critical tools, systems, and technical support
- Provide customized solutions for complex well challenges
- Deliver projects faster through OEM certified processes and global inventory access
- Train and upskill our team in alignment with international standards



We are committed to building long term relationships with technology leaders who share our values of integrity, innovation, and performance. These alliances enhance our ability to deliver structured, safe, and world class solutions across Nigeria's energy sector.

Why Sepha Energies?

We distinguish ourselves through execution excellence, technical depth, and client-focused solutions that deliver measurable results across Nigeria's upstream oil and gas sector. Our value proposition lies in providing fast, reliable, and commercially flexible services, strengthened by robust governance and global technical partnerships.

Our Core Differentiators:

Execution Excellence

We deliver projects on time, within budget, and with strict adherence to client specifications, reducing downtime and ensuring operational efficiency.

Global Technical Partnerships

Our alliances with leading Original Equipment Manufacturers (OEMs) and service partners enable seamless access to advanced technologies and long-lead equipment.

Local Content Strength

With in-country capabilities, skilled Nigerian professionals, and compliance with NCDMB regulations, we maximize local participation while maintaining global standards.

Financial Capability & Commercial Flexibility

Our access to project financing and structured commercial models allows us to execute contracts without delays and adapt to client needs.

Safety, Quality & Reliability

We operate with a zero-compromise approach to HSE, ensuring safe, high-quality service delivery across all projects.

Sustainable Impact

Through our ESG and CSR initiatives, including the NurtureHer STEM Development Initiative, we contribute to community development and long-term industry growth.

Plug and Abandonment Deployment History

We have built a strong and growing track record in the deployment of bridge plugs and cement retainers for a range of well intervention applications, including plug and abandonment (P&A), zonal isolation, well integrity restoration, and stimulation support. Our operations span both retrievable and permanent systems, executed in line with Original Equipment Manufacturer (OEM) specifications and industry best practices.

Sepha's deployment capability is fully integrated. We provide end to end service delivery from tool preparation and redress to on site deployment and post job documentation, executed entirely by our in house engineering and field teams. As a result of our execution reliability and strong technical competence, we are increasingly called upon to perform this scope of work on behalf of global OEMs who now rely on our delivery capacity in the region.

Our team is proficient in assembling and preparing these tools both in the workshop and at the rig site, ensuring readiness, traceability, and full compliance with engineering standards. We maintain a structured inventory of these tools and continue to expand our capabilities to meet growing operator demand across the region.

Deployment Highlights:

- Over 40 successful deployments of bridge plugs and cement retainers across Nigeria and Ghana
- Tools sourced from BOTIL and other leading international OEMs
- Field operations executed across land, swamp, and offshore rig sites
- Jobs performed under P&A campaigns, well integrity programs, and isolation operations
- Tools deployed via wireline or drill pipe, depending on wellbore configuration
- Zero NPT recorded and consistently high client satisfaction
- Comprehensive documentation provided, including QA/QC logs, job reports, and redress

Independent Execution Capabilities

Plug & Abandonment

| SN | DESCRIPTION | CLIENT | WELL NAME | STATUS |
|----|---|------------------|-----------|-----------------------|
| 1 | Installation of 6AA Bridge Plug on Wireline | 4mation Drilling | DI -2 | Executed Successfully |
| 2 | Installation of 6AA Bridge Plug on Wireline | SLB/Shaftnet | Akamba 3 | Executed Successfully |
| 3 | Installation of 6AA Bridge Plug on Wireline | EOP | Emouha 1 | Executed Successfully |

Strategic Execution Experience with Technical Partners

We have successfully executed numerous upstream projects in collaboration with globally recognized OEMs and technology providers. These partnerships demonstrate our capability to deliver field-ready solutions, meet international technical standards, and serve as a trusted local execution partner on complex, high-value operations. Through these engagements, we have demonstrated the flexibility to work under split scope, full execution, and OEM supervised models, bringing together local expertise, compliance assurance, and consistent delivery performance.

We continue to support and execute projects alongside technical partners such as SLB, Halliburton, Weatherford, GEOSI, and Expro, ensuring seamless tool integration, operational efficiency, and measurable value across the upstream value chain. At Sepha, we remain committed to delivering field proven results while strengthening Nigeria's local execution capacity and upholding global best practices.

Projects Executed

| S/N | DESCRIPTION | CLIENT | WELL NAME | STATUS | TECHNICAL PARTNER |
|-----|--|------------------|------------|---------------------|-------------------|
| 1 | Dual String Completion & Lower Completion Services | 4mation Drilling | DI -2 | Flawlessly Executed | SLB |
| 2 | Two Zone Gravel Pack Completion & Intermediate Completion Services | EOP | Emouha 1 | Flawlessly Executed | SLB |
| 3 | Dual String Completion Services | EOP | Emouha 1 | Flawlessly Executed | SLB |
| 4 | Cased Hole Wireline Logging and Perforation Services | EOP | Emouha 1 | Flawlessly Executed | SLB |
| 5 | Gravel Pack Pumping Services | EOP | Emouha 1 | Flawlessly Executed | SLB |
| 6 | Provision of Re-perforation of the Target Reservoir Interval | Pillar Oil | Umuseti 3T | Flawlessly Executed | SLB |

Projects In Pipeline

| S/N | DESCRIPTION | CLIENT | WELL NAME | STATUS | TECHNICAL PARTNER |
|-----|---|--|--------------------|---------------------|-------------------|
| 1 | Three Zone Gravel Pack Completion & Intermediate Completion Services | EOP | Emouha 2 | Contract Awarded | SLB |
| 2 | Dual String Completion Services | EOP | Emouha 2 | Contract Awarded | SLB |
| 3 | Cased Hole Wireline Logging and Perforation Services | EOP | Emouha 2 | Contract Awarded | SLB |
| 4 | Gravel Pack Pumping Services | EOP | Emouha 2 | Contract Awarded | SLB |
| 5 | Mud Logging Services | Tulcan | PPL 244 | Project Ongoing | SLB |
| 6 | Provision of DD, MWD & GWD Services | EOP | Emouha 2 | Awaiting Contract | SLB |
| 7 | Hely Creek 02, 10k rated HPHT Lower Completion Equipment | Platform/ Transnational Energy Limited | Hely Creek 02 | Contract Awarded | SLB |
| 8 | Hely Creek 02, 10k rated HPHT Upper Completion Equipment | Platform/ Transnational Energy Limited | Hely Creek 02 | Contract Awarded | SLB |
| 9 | OH Logging, MDT (Pretest & Sampling), Quad Combo (GR, Neutron Density, Sonic & Resistivity, CBL- VDL, Plug Seng and Perforation | Platform/ Transnational Energy Limited | Hely Creek 02 | Contract Awarded | SLB |
| 10 | Expandable Casing Patch | Platform/ Transnational Energy Limited | Hely Creek 02 | Contract Awarded | SLB |
| 11 | Lower Completion Services | Platform/ Transnational Energy Limited | Hely Creek 02 | Contract Awarded | SLB |
| 12 | 12.25" OH, MDT (Pretest & Sampling), Quad Combo (GR, Neutron Density, Sonic & Resistivity, CBL- VDL, Plug Se ng and Perforation | Platform/ Transnational Energy Limited | Hely Creek 03 | Contract Awarded | SLB |
| 13 | LINER HANGER INSTALATION SERVICES | Platform/ Transnational Energy Limited | Hely Creek 03 | Contract Awarded | SLB |
| 14 | DUAL STRING UPPER COMPLETION | Platform Petroleum | Egbaoma 12 | Contract Awarded | SLB |
| 15 | OH Logging, MDT (Pretest & Sampling) , Quad Combo (GR, Neutron, Density, Sonic & Resistivity, CBL- VDL, Plug Setting and Perforation) | Platform Petroleum | Benin Estuary 2 | Contract Awarded | SLB |
| 16 | OH Logging, MDT (Pretest & Sampling) , Quad Combo (GR, Neutron, Density, Sonic & Resistivity, CBL- VDL, Plug Setting and Perforation) | Platform Petroleum | Kuri 3 | Contract Awarded | SLB |
| 17 | Dual Completions and Gravel Pack Services | Platform Petroleum | Benin Estuary 2 | Contract Awarded | SLB |
| 18 | EGBAOMA-12, 5k rated Lower Completion Equipment | Platform/ Transnational Energy Limited | Egbaoma 12 | Contract Awarded | SLB |
| 19 | EGBAOMA-12, 5k rated Upper Completion Equipment | Platform/ Transnational Energy Limited | Egbaoma 12 | Contract Awarded | SLB |
| 20 | Hely Creek 03, 10k rated HPHT Lower Completion Equipment | Platform/ Transnational Energy Limited | Hely Creek 03 | Contract Awarded | SLB |
| 21 | Hely Creek 03, 10k rated HPHT Upper Completion Equipment | Platform/ Transnational Energy Limited | Hely Creek 03 | Contract Awarded | SLB |

Support Documents

We maintain a comprehensive suite of documentation that demonstrates our operational readiness, technical alignment, statutory compliance, and execution credibility. These documents are available upon request or as required during prequalification, bidding, or contract onboarding processes.

Our support documentation includes:

- Technical and Commercial Support Letters from global OEMs and technology providers
- Work Completion Certificates (WCCs) for successfully executed projects
- Memorandum of Understanding (MOUs) with international OEMs and strategic partners
- Subcontract Agreements with OEMs for the deployment, integration, and execution of proprietary technologies
- Executed Contracts and Client Engagement Agreements
- Customer Satisfaction Surveys and Post-Project Evaluation
- ISO Certifications and Quality Management Documents:
 - ISO 9001:2015 – Quality Management System (QMS)
 - ISO 14001:2015 – Environmental Management System (EMS)
 - ISO 45001:2018 – Occupational Health and Safety Management System (OHSMS)
- Statutory Company Documents including:
 - CAC Registration and Form CAC7/Status Report
 - Tax Clearance Certificate
 - PENCOM, ITF, and NSITF Compliance Certificates
- Regulatory Permits and Compliance Certificates, such as:
 - NUPRC Permits and Approvals
 - NOJIC JQS Registration and Nigerian Content Equipment Certificate (NCEC)

This robust documentation framework reinforces our capability to operate under full execution, split-scope, and OEM-supervised models, while ensuring alignment with national regulatory requirements, international service standards, and client-specific expectations.

Independent Execution Capabilities

Plug & Abandonment - Noranova

| SN | DESCRIPTION | CLIENT | WELL NAME | STATUS |
|----|---|----------------------------|--------------------|-----------------------|
| 1 | Installation of 6AA Bridge Plug on Wireline | Sterlin global/Senepert | UTA 26 | Executed Successfully |
| 2 | Installation of 6AA Bridge Plug on Wireline | Weatherford/Chevron | Staturm 1X | Executed Successfully |
| 3 | Installation of 6AA Bridge Plug on Wireline | Conoil/Geoplex | Otuo South 19RD | Executed Successfully |
| 4 | Installation of 6AA Bridge Plug on Wireline | Matpatson | Ebendo North | Executed Successfully |
| 5 | Installation of 6AA Bridge Plug on Wireline | Hans oil and Gas Ghana | SaltPond 10A3 | Executed Successfully |
| 6 | Installation of 6AA Bridge Plug on Wireline | Hans Oil and Gas Ghana | Saltpond 10A4 | Executed Successfully |
| 7 | Installation of 3BB Bridge Plug on Wireline | Hans Oil and Gas Ghana | Saltpond 10A5 | Executed Successfully |
| 8 | Installation of 3BB Bridge Plug on Wireline | Hans Oil and Gas Ghana | Saltpond 10A6 | Executed Successfully |
| 9 | Installation of 6AA Bridge Plug on Wireline | Matrix Energy | Apani 2 | Executed Successfully |
| 10 | Installation of 3BB Bridge Plug on Wireline | Total/Geoplex offshore | Ntokon G1(1st Run) | Executed Successfully |
| 11 | Installation of 3BB Bridge Plug on Wireline | Total/Geoplex offshore | Ntokon G1(2nd Run) | Executed Successfully |
| 12 | Installation of 3BB Bridge Plug on Wireline | Litewll/NEPL | Ugheli 43 | Executed Successfully |
| 13 | Installation of 3BB Bridge Plug on Wireline | Litewll/NEPL | Ugheli 43 | Executed Successfully |
| 14 | Installation of 6AA Bridge Plug on Wireline | NAOC/GEOPLEX | OBIAFU 44 | Executed Successfully |
| 15 | Installation of 6AA Bridge Plug on Wireline | SHN/Platform | Kuri 2 | Executed Successfully |
| 16 | Installation of 6AA Bridge Plug on Wireline | UGBEBIG Nig Ltd | OKIORI 01 | Executed Successfully |
| 17 | Installation of 6AA Bridge Plug on Wireline | MAPTPATSON/Tulcan offshore | TSB 3 | Executed Successfully |
| 18 | Installation of 6AA Bridge Plug on Wireline | MAPTPATSON | Berniene 1 | Executed Successfully |
| 19 | Installation of 6AA Bridge Plug on Wireline | Sheval Engineering | Wad1-2 | Executed Successfully |
| 20 | Installation of 6AA Bridge Plug on Wireline | Sheval Engineering | Wad1-2 | Executed Successfully |
| 21 | Installation of 6AA Bridge Plug on Wireline | Sheval Engineering | Wad1-2 | Executed Successfully |
| 22 | Installation of 3BB Bridge Plug on Wireline | SLB/Ashgrove E&P | Isoko 4 | Executed Successfully |
| 23 | Installation of 3BB Bridge Plug on Wireline | SLB/Ashgrove E&P | Isoko 4 | Executed Successfully |

Strategic Execution Experience with Technical Partners

Projects Executed - Noranova

| S/N | DESCRIPTION | CLIENT | WELL NAME | STATUS | TECHNICAL PARTNER |
|-----|--|---------------------|------------|---------------------|-------------------|
| 1 | Performed Wireline logging activities (CBL/VDL) | Platform/ New Cross | Egbaoma 11 | Flawlessly Executed | SLB |
| 2 | Performed Wireline Perforation with 7" Deep Penetrating 12SPF Gun, 7 runs. | Platform/ New Cross | Egbaoma 11 | Flawlessly Executed | SLB |
| 3 | Performed 12.25" OH, MDT (Pretest & Sampling), Quad Combo | 'SHN | Kuri-2 | Flawlessly Executed | SLB |
| 4 | Performed CBL-VDL, AND Set 9-5/8" Plug | 'SHN | Kuri-2 | Flawlessly Executed | SLB |
| 5 | Performed Wireline Perforation with 7" Deep Penetrating 12SPF Gun, 7 runs. | 'SHN | Kuri-2 | Flawlessly Executed | SLB |
| 6 | Performed Two Zone Gravel Pack Lower Completion & Intermediate Completion | 'SHN | Kuri-2 | Flawlessly Executed | SLB |
| 7 | Performed 3-1/2"x 3-1/2" Two string Dual (TSD) Upper Completion with Slim Type 5.001" OD | 'SHN | Kuri-2 | Flawlessly Executed | SLB |
| 8 | Gravel Pack Pumping Services | 'SHN | Kuri-2 | Flawlessly Executed | SLB |

Projects In Pipeline - Noranova

| S/N | DESCRIPTION | CLIENT | WELL NAME | STATUS | TECHNICAL PARTNER |
|-----|----------------------------------|-----------------|-----------|-------------------|-------------------|
| 1 | PROVISION OF COMPLETION SERVICES | OANDO | TBD | Awaiting Contract | SLB |
| 2 | PROVISION OF COMPLETION SERVICES | NEPL/ND WESTERN | OML 34 | Awaiting Contract | SLB |

OFFICE COMPLEX



SEPHA ENERGIES

Contact Us



3 Royal Palm Estate, Off Peter Odili Road,
Port Harcourt, Rivers State, Nigeria.



info@sephaenergies.com



+234-913-846-4024



Sepha Energies



Sepha Energies



Sepha Energies



sepha_energies_



www.sephaenergies.com

