

# SEPHA ENERGIES

Execution. Innovation. Local Impact.



## COMPANY PROFILE

# The Transition

Sepha Energies was born out of a strategic decision to scale, structure, and reposition for long-term growth. After years of building a competitive presence through Noranova Resources Company Limited, we recognized the need to evolve into a platform capable of attracting institutional financing, deepening local content capacity, and driving innovation at scale.

As part of this evolution, Noranova Resources now operates as a business unit under the Sepha corporate structure, continuing to execute projects with the same technical excellence, while benefiting from the governance, structure, and strategic clarity that Sepha provides.



# SEPHA ENERGIES

Together, we are delivering energy and raising the standard.

# Executive Summary

At Sepha Energies Limited, we are building more than a service company, we are establishing a structured, investor-ready platform designed to deliver scalable, execution-driven upstream solutions across Nigeria and the West African region.

Sepha Energies was founded with a bold vision: to access long-term financing, scale operations, drive technology adoption, and deepen Nigeria's local content capacity.

It reflects the evolution of a leadership journey committed to delivering world-class energy services anchored in structure, discipline, and measurable impact.

We are led by a multidisciplinary team with over 150 years of combined experience in field operations, technical service delivery, and executive leadership supported by a proven track record of successful project execution and global industry collaboration across Nigeria and Sub-Saharan Africa.

As part of our growth strategy, Sepha maintains Nigeria-based inventory of long-lead oilfield equipment, enabling rapid mobilization and eliminating costly delays. This initiative is central to our broader mission: enhancing local content, accelerating service delivery, and supporting national development through job creation and in-country value.

At Sepha, we believe true industry leadership is built on structure, innovation, and execution. We are proud to serve as a trusted partner to clients, OEMs, and stakeholders across the oil and gas ecosystem and we welcome you to join us on this journey.

Sepha Energies Limited .  
Build to Execute. Driven to Deliver

# Our Vision

---

To be Africa's most trusted indigenous energy solutions company, delivering upstream excellence through innovation, local capacity, and a performance driven culture.

# Our Mission

---

To provide world class drilling, evaluation, completion, production and intervention services across the upstream oil and gas sector, while advancing local content, integrating global technologies, and building a sustainable platform for long term growth and impact.

# Our Strategic Goal

## ■ Deliver World Class Execution

Consistently exceed client expectations through structured service delivery, technical precision, safety and operational reliability.

## ■ Strengthen In Country Capability

Invest in Nigerian infrastructure, talent, and inventory to improve speed, access, and reliability

## ■ Build Strategic Global Alliances

Partner with OEMs and global leaders to localize advanced technologies and expertise.

## ■ Operate with Governance and Discipline

Build a scalable, investor ready company with strong compliance, structure, and leadership.

## ■ Drive Inclusion and Impact

Empower women, youth, and communities through education, job creation, and CSR initiatives.

## ■ Position Nigeria as a Regional Service Hub

Make Sepha a model for indigenous excellence and regional competitiveness in West Africa.



ISO 9001:2015  
ISO 14001:2015  
ISO 45001:2018

# Board Of Directors



Sandra Ekpe Agho  
MD/CEO

Sandra Ekpe Agho is a seasoned petroleum engineer, energy entrepreneur, and advocate for inclusive leadership in Africa's oil and gas industry. With over 15 years of experience, she leads Sepha Energies Limited, a fast-growing indigenous company delivering advanced upstream services in drilling, formation evaluation, wellbore construction, completions, and interventions.

She also oversees Noranova Resources Company Limited, now operating under Sepha's corporate structure, contributing to upstream service delivery and technical partnerships. Sandra began her career at Baker Hughes, working across Nigeria and the U.S., where she built deep technical and field expertise. She holds a B.Sc. in Mathematics/Computer Science, a PGD and M.Sc. in Petroleum Engineering, and is pursuing a Ph.D. in Petroleum Engineering.

In 2024, Sandra launched Sepha Energies to restructure and scale her operations under a unified, investor-ready platform focused on capital efficiency, execution, and local content

growth. She is also championing the establishment of long-lead oilfield equipment inventory in Nigeria to reduce procurement timelines and boost project delivery speed.

Sandra's leadership is grounded in technical rigor, strong governance, and disciplined execution. She has built strategic alliances with global service companies while driving local value creation, job opportunities, and industry capacity development.

Beyond business, she is a UN Global Ambassador for GEPS, Rivers State Chairperson of WEOG, and founder of the NurtureHer STEM Development Initiative and iBelieve Outreach Network, both focused on empowering young girls and communities through STEM education, mentorship, and grassroots engagement.

Widely respected for her strategic clarity and systems-oriented leadership, Sandra integrates faith, excellence, and vision in all she does building sustainable structures and raising the next generation of energy leaders.

# Board Chairman

---



Mr. Mansaray Abraham  
Chairman

## Non-Executive Directors

---



Mrs. Edna Asobi  
ESG & Sustainability



Mrs. Efe Osazuwa  
Commercial Strategy & Business  
Development



Barr. Mrs. Judith Adeniji  
Legal, Governance &  
Compliance



Ms. Victoria Emeya  
External Relations &  
Stakeholder Engagement



Mr. David Agho  
Finance and Investment Strategy



Mr. Phillip Ekpe  
International Strategy &  
Partnerships



# Management Team

At Sepha Energies Limited, our strength lies in our people. We are led by a multidisciplinary leadership team with over 150 years of combined experience spanning upstream operations, technical service delivery, project execution, finance, and strategic management.

Our leadership combines field-tested expertise with boardroom discipline — united by a shared vision to scale indigenous capacity, drive execution excellence, and raise the standard of oilfield service delivery in Nigeria and the broader Sub-Saharan African region.



Mr. Alexander Nnadi  
Service Delivery Manager  
Experience 11 Years



Mr. Sami Khalil  
Technical Service Manager  
(Drilling Services)  
Experience 20 Years

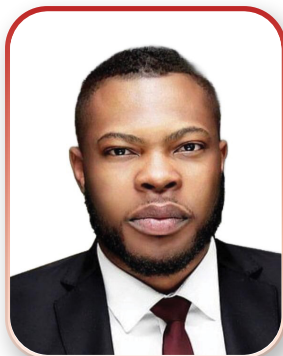


Emmanuel Akogwu  
Finance Manager  
Experience 14 Years

# Management Team



Uwax Oshionwu  
Operations Manager  
Experience 14 Years



Alexander Obi  
Sales Manager  
Experience 12 Years



Onuegbu Desmond  
HR Specialist  
Experience 6 Years



Greg Aguveso  
Technical Service Coordinator  
- DD / LWD / MWD / WL / SL -  
Experience 18 Years



Chukwudalu Ekwue  
Technical Service Coordinator  
- WELL COMPLETION / PUMP / INTERVENTION -  
Experience 2 Years



Ini Jonah  
Commercial & Contracts  
Lead (NC Manager)  
Experience 10 Years



Chima Chukwu  
QHSSE  
(Internal ISO Auditor)  
Experience 7 Years



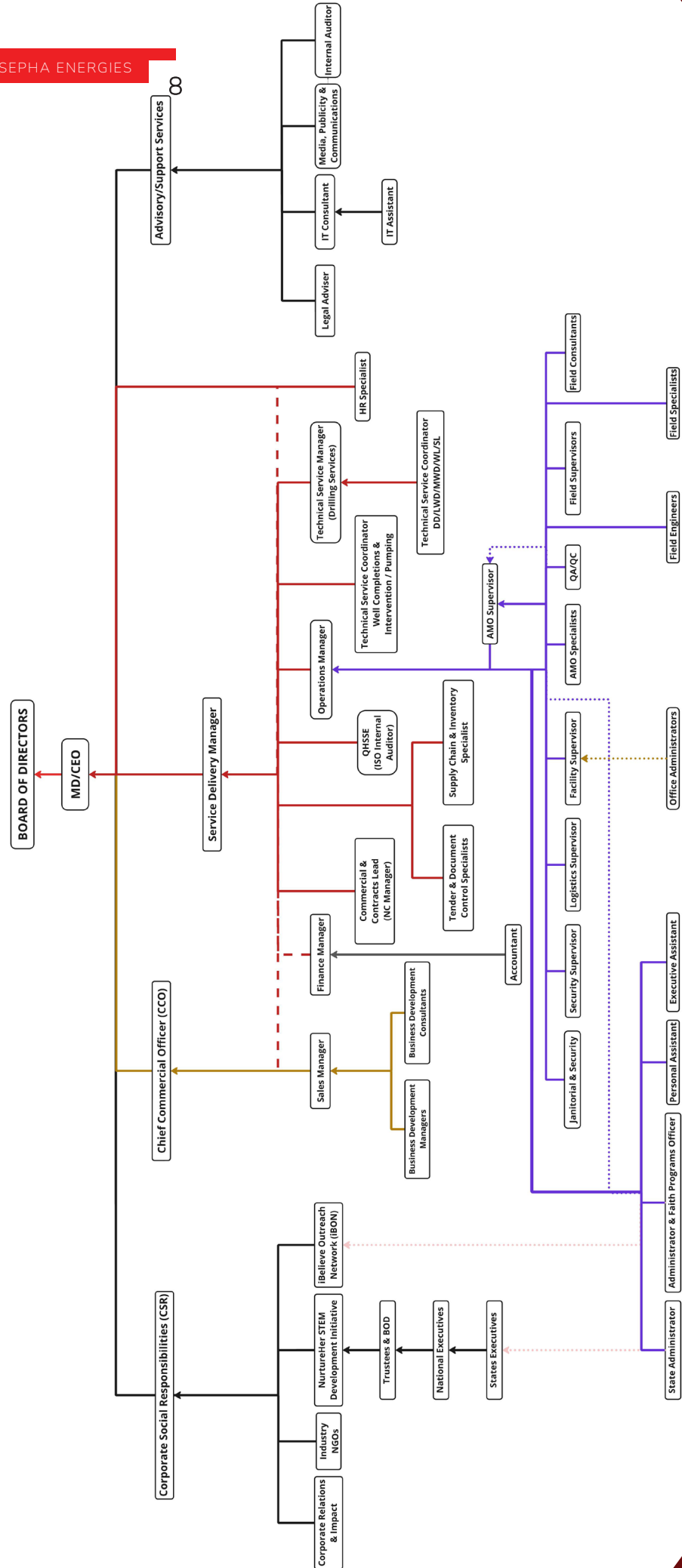
Francis Anichie  
Supply Chain & Inventory  
Specialist  
Experience 12 Years



Lawrence Idahosa  
Tender & Document Control  
Specialist  
Experience 14 Years

# Our Organogram

SEPHA ENERGIES



# Products and Services

We deliver execution driven, technically sound upstream oilfield services designed to support operators across Nigeria and Sub-Saharan Africa. Our solutions are built on precision, reliability, and structured delivery. We help clients reduce downtime, improve well performance, and achieve project success.

Our strength lies not only in our multidisciplinary team but also in the capabilities of our global technical partners and access to financing that enables seamless service execution. This unique combination allows us to bridge the gap between operator requirements and technology deployment, ensuring faster mobilization, timely delivery, and measurable results.

## SUB-SURFACE PRODUCT & SERVICES

- |                                    |  |
|------------------------------------|--|
| 1 Directional Drilling/LWD/MWD     | 8 Coiled Tubing Services                 |
| 2 Well Completion and Intervention | 9 Mud & Brine Engineering Services       |
| 3 Wireline Logging & Perforation   | 10 Project Management & Turnkey Services |
| 4 Gravel Pack Services             | 11 Catering Services                     |
| 5 Plug & Abandonment               | 12 HWU/Workover & Drilling Rig           |
| 6 Cementing                        | 13 Wellbore Cleanup                      |
| 7 Drilling Tools Rentals           | 14 OCTG and Line Pipes supply            |

## MARINE OPERATION

- |                           |                                   |
|---------------------------|-----------------------------------|
| 1 EPCIC                   | 3 Pipe Installation & Maintenance |
| 2 Marine Support Services | 4 Marine Security                 |

Backed by strong OEM alliances and supported by in-country inventory of long lead equipment, Sepha Energies is positioned to execute with speed, technical depth, and commercial flexibility.

# Our Technical Partners & Alliances

We believe that excellence in service delivery is anchored in strong technical partnerships, shared standards, and strategic collaboration. We have built alliances with globally recognized Original Equipment Manufacturers (OEMs) and technology providers to ensure our clients receive the highest quality solutions backed by proven engineering expertise.

## Partnerships Offerings:

- Deploy reliable and field tested technologies
- Maintain access to critical tools, systems, and technical support
- Provide customized solutions for complex well challenges
- Deliver projects faster through OEM certified processes and global inventory access
- Train and upskill our team in alignment with international standards



### SUB-SURFACE PRODUCT & SERVICES



### MARINE OPERATION



### RIG SERVICES



We are committed to building long term relationships with technology leaders who share our values of integrity, innovation, and performance. These alliances enhance our ability to deliver structured, safe, and world class solutions across Nigeria's energy sector.

# Why Sepha Energies?

We distinguish ourselves through execution excellence, technical depth, and client-focused solutions that deliver measurable results across Nigeria's upstream oil and gas sector. Our value proposition lies in providing fast, reliable, and commercially flexible services, strengthened by robust governance and global technical partnerships.

## Our Core Differentiators:

### Execution Excellence

We deliver projects on time, within budget, and with strict adherence to client specifications, reducing downtime and ensuring operational efficiency.

### Global Technical Partnerships

Our alliances with leading Original Equipment Manufacturers (OEMs) and service partners enable seamless access to advanced technologies and long-lead equipment.

### Local Content Strength

With in-country capabilities, skilled Nigerian professionals, and compliance with NCDMB regulations, we maximize local participation while maintaining global standards.

### Financial Capability & Commercial Flexibility

Our access to project financing and structured commercial models allows us to execute contracts without delays and adapt to client needs.

### Safety, Quality & Reliability

We operate with a zero-compromise approach to HSE, ensuring safe, high-quality service delivery across all projects.

### Sustainable Impact

Through our ESG and CSR initiatives, including the NurtureHer STEM Development Initiative, we contribute to community development and long-term industry growth.

# Plug and Abandonment Deployment History

We have built a strong and growing track record in the deployment of bridge plugs and cement retainers for a range of well intervention applications, including plug and abandonment (P&A), zonal isolation, well integrity restoration, and stimulation support. Our operations span both retrievable and permanent systems, executed in line with Original Equipment Manufacturer (OEM) specifications and industry best practices.

Sepha's deployment capability is fully integrated. We provide end to end service delivery from tool preparation and redress to on site deployment and post job documentation, executed entirely by our in house engineering and field teams. As a result of our execution reliability and strong technical competence, we are increasingly called upon to perform this scope of work on behalf of global OEMs who now rely on our delivery capacity in the region.

Our team is proficient in assembling and preparing these tools both in the workshop and at the rig site, ensuring readiness, traceability, and full compliance with engineering standards. We maintain a structured inventory of these tools and continue to expand our capabilities to meet growing operator demand across the region.

## Deployment Highlights:

- Over 40 successful deployments of bridge plugs and cement retainers across Nigeria and Ghana
- Tools sourced from BOTIL and other leading international OEMs
- Field operations executed across land, swamp, and offshore rig sites
- Jobs performed under P&A campaigns, well integrity programs, and isolation operations
- Tools deployed via wireline or drill pipe, depending on wellbore configuration
- Zero NPT recorded and consistently high client satisfaction
- Comprehensive documentation provided, including QA/QC logs, job reports, and redress

## Independent Execution Capabilities

### Plug & Abandon ment

SN	DESCRIPTION	CLIENT	WELL NAME	STATUS
1	Installation of 6AA Bridge Plug on Wireline	4mation Drilling	DI -2	Executed Successfully
2	Installation of 6AA Bridge Plug on Wireline	SLB/Shaftnet	Akamba 3	Executed Successfully
3	Installation of 6AA Bridge Plug on Wireline	EOP	Emouha 1	Executed Successfully

## Strategic Execution Experience with Technical Partners

We have successfully executed numerous upstream projects in collaboration with globally recognized OEMs and technology providers. These partnerships demonstrate our capability to deliver field-ready solutions, meet international technical standards, and serve as a trusted local execution partner on complex, high-value operations. Through these engagements, we have demonstrated the flexibility to work under split scope, full execution, and OEM supervised models, bringing together local expertise, compliance assurance, and consistent delivery performance.

We continue to support and execute projects alongside technical partners such as SLB, Halliburton, Weatherford, GEOSI, and Expro, ensuring seamless tool integration, operational efficiency, and measurable value across the upstream value chain. At Sepha, we remain committed to delivering field proven results while strengthening Nigeria's local execution capacity and upholding global best practices.

### Projects Executed

S/N	DESCRIPTION	CLIENT	WELL NAME	STATUS	TECHNICAL PARTNER
1	Dual String Completion & Lower Completion Services	4mation Drilling	DI -2	Flawlessly Executed	SLB
2	Two Zone Gravel Pack Completion & Intermediate Completion Services	EOP	Emouha 1	Flawlessly Executed	SLB
3	Dual String Completion Services	EOP	Emouha 1	Flawlessly Executed	SLB
4	Cased Hole Wireline Logging and Perforation Services	EOP	Emouha 1	Flawlessly Executed	SLB
5	Gravel Pack Pumping Services	EOP	Emouha 1	Flawlessly Executed	SLB
6	Provision of Re-perforation of the Target Reservoir Interval	Pillar Oil	Umuseti 3T	Flawlessly Executed	SLB

# Projects In Pipeline

S/N	DESCRIPTION	CLIENT	WELL NAME	STATUS	TECHNICAL PARTNER
1	Three Zone Gravel Pack Completion & Intermediate Completion Services	EOP	Emouha 2	Contract Awarded	SLB
2	Dual String Completion Services	EOP	Emouha 2	Contract Awarded	SLB
3	Cased Hole Wireline Logging and Perforation Services	EOP	Emouha 2	Contract Awarded	SLB
4	Gravel Pack Pumping Services	EOP	Emouha 2	Contract Awarded	SLB
5	Mud Logging Services	Tulcan	PPL 244	Project Ongoing	SLB
6	Provision of DD, MWD & GWD Services	EOP	Emouha 2	Awaiting Contract	SLB
7	Hely Creek 02, 10k rated HPHT Lower Completion Equipment	Platform/ Transnational Energy Limited	Hely Creek 02	Contract Awarded	SLB
8	Hely Creek 02, 10k rated HPHT Upper Completion Equipment	Platform/ Transnational Energy Limited	Hely Creek 02	Contract Awarded	SLB
9	OH Logging, MDT (Pretest & Sampling), Quad Combo (GR, Neutron Density, Sonic & Resistivity, CBL- VDL, Plug Setting and Perforation)	Platform/ Transnational Energy Limited	Hely Creek 02	Contract Awarded	SLB
10	Expandable Casing Patch	Platform/ Transnational Energy Limited	Hely Creek 02	Contract Awarded	SLB
11	Lower Completion Services	Platform/ Transnational Energy Limited	Hely Creek 02	Contract Awarded	SLB
12	12.25" OH, MDT (Pretest & Sampling), Quad Combo (GR, Neutron Density, Sonic & Resistivity, CBL- VDL, Plug Setting and Perforation)	Platform/ Transnational Energy Limited	Hely Creek 03	Contract Awarded	SLB
13	LINER HANGER INSTALLATION SERVICES	Platform/ Transnational Energy Limited	Hely Creek 03	Contract Awarded	SLB
14	DUAL STRING UPPER COMPLETION	Platform Petroleum	Egbaoma 12	Contract Awarded	SLB
15	OH Logging, MDT (Pretest & Sampling) , Quad Combo (GR, Neutron, Density, Sonic & Resistivity, CBL- VDL, Plug Setting and Perforation)	Platform Petroleum	Benin Estuary 2	Contract Awarded	SLB
16	OH Logging, MDT (Pretest & Sampling) , Quad Combo (GR, Neutron, Density, Sonic & Resistivity, CBL- VDL, Plug Setting and Perforation)	Platform Petroleum	Kuri 3	Contract Awarded	SLB
17	Dual Completions and Gravel Pack Services	Platform Petroleum	Benin Estuary 2	Contract Awarded	SLB
18	EGBAOMA-12, 5k rated Lower Completion Equipment	Platform/ Transnational Energy Limited	Egbaoma 12	Contract Awarded	SLB
19	EGBAOMA-12, 5k rated Upper Completion Equipment	Platform/ Transnational Energy Limited	Egbaoma 12	Contract Awarded	SLB
20	Hely Creek 03, 10k rated HPHT Lower Completion Equipment	Platform/ Transnational Energy Limited	Hely Creek 03	Contract Awarded	SLB
21	Hely Creek 03, 10k rated HPHT Upper Completion Equipment	Platform/ Transnational Energy Limited	Hely Creek 03	Contract Awarded	SLB

# Support Documents

We maintain a comprehensive suite of documentation that demonstrates our operational readiness, technical alignment, statutory compliance, and execution credibility. These documents are available upon request or as required during prequalification, bidding, or contract onboarding processes.

Our support documentation includes:

- Technical and Commercial Support Letters from global OEMs and technology providers
- Work Completion Certificates (WCCs) for successfully executed projects
- Memorandum of Understanding (MOUs) with international OEMs and strategic partners
- Subcontract Agreements with OEMs for the deployment, integration, and execution of proprietary technologies
- Executed Contracts and Client Engagement Agreements
- Customer Satisfaction Surveys and Post-Project Evaluation
- ISO Certifications and Quality Management Documents:
  - ISO 9001:2015 – Quality Management System (QMS)
  - ISO 14001:2015 – Environmental Management System (EMS)
  - ISO 45001:2018 – Occupational Health and Safety Management System (OHSMS)
- Statutory Company Documents including:
  - CAC Registration and Form CAC7/Status Report
  - Tax Clearance Certificate
  - PENCOM, ITF, and NSITF Compliance Certificates
- Regulatory Permits and Compliance Certificates, such as:
  - NUPRC Permits and Approvals
  - NOJIC JQS Registration and Nigerian Content Equipment Certificate (NCEC)

This robust documentation framework reinforces our capability to operate under full execution, split-scope, and OEM-supervised models, while ensuring alignment with national regulatory requirements, international service standards, and client-specific expectations.

# Independent Execution Capabilities

## Plug & Abandonment - Noranova

SN	DESCRIPTION	CLIENT	WELL NAME	STATUS
1	Installation of 6AA Bridge Plug on Wireline	Sterlin global/Senepert	UTA 26	Executed Successfully
2	Installation of 6AA Bridge Plug on Wireline	Weatherford/Chevron	Staturm 1X	Executed Successfully
3	Installation of 6AA Bridge Plug on Wireline	Conoil/Geoplex	Otuo South 19RD	Executed Successfully
4	Installation of 6AA Bridge Plug on Wireline	Matpatson	Ebendo North	Executed Successfully
5	Installation of 6AA Bridge Plug on Wireline	Hans oil and Gas Ghana	SaltPond 10A3	Executed Successfully
6	Installation of 6AA Bridge Plug on Wireline	Hans Oil and Gas Ghana	Saltpond 10A4	Executed Successfully
7	Installation of 3BB Bridge Plug on Wireline	Hans Oil and Gas Ghana	Saltpond 10A5	Executed Successfully
8	Installation of 3BB Bridge Plug on Wireline	Hans Oil and Gas Ghana	Saltpond 10A6	Executed Successfully
9	Installation of 6AA Bridge Plug on Wireline	Matrix Energy	Apani 2	Executed Successfully
10	Installation of 3BB Bridge Plug on Wireline	Total/Geoplex offshore	Ntokon G1(1st Run)	Executed Successfully
11	Installation of 3BB Bridge Plug on Wireline	Total/Geoplex offshore	Ntokon G1(2nd Run)	Executed Successfully
12	Installation of 3BB Bridge Plug on Wireline	Litewll/NEPL	Ugheli 43	Executed Successfully
13	Installation of 3BB Bridge Plug on Wireline	Litewll/NEPL	Ugheli 43	Executed Successfully
14	Installation of 6AA Bridge Plug on Wireline	NAOC/GEOPLEX	OBIAFU 44	Executed Successfully
15	Installation of 6AA Bridge Plug on Wireline	SHN/Platform	Kuri 2	Executed Successfully
16	Installation of 6AA Bridge Plug on Wireline	UGBEBIG Nig Ltd	OKIORI 01	Executed Successfully
17	Installation of 6AA Bridge Plug on Wireline	MAPTPATSON/Tulcan offshore	TSB 3	Executed Successfully
18	Installation of 6AA Bridge Plug on Wireline	MAPTPATSON	Berniene 1	Executed Successfully
19	Installation of 6AA Bridge Plug on Wireline	Sheval Engineering	Wad1-2	Executed Successfully
20	Installation of 6AA Bridge Plug on Wireline	Sheval Engineering	Wad1-2	Executed Successfully
21	Installation of 6AA Bridge Plug on Wireline	Sheval Engineering	Wad1-2	Executed Successfully
22	Installation of 3BB Bridge Plug on Wireline	SLB/Ashgrove E&P	Isoko 4	Executed Successfully
23	Installation of 3BB Bridge Plug on Wireline	SLB/Ashgrove E&P	Isoko 4	Executed Successfully

## Strategic Execution Experience with Technical Partners

### Projects Executed - Noranova

S/N	DESCRIPTION	CLIENT	WELL NAME	STATUS	TECHNICAL PARTNER
1	Performed Wireline logging activities (CBL/VDL)	Platform/ New Cross	Egbaoma 11	Flawlessly Executed	SLB
2	Performed Wireline Perforation with 7" Deep Penetrating 12SPF Gun, 7 runs.	Platform/ New Cross	Egbaoma 11	Flawlessly Executed	SLB
3	Performed 12.25" OH, MDT (Pretest & Sampling), Quad Combo	'SHN	Kuri-2	Flawlessly Executed	SLB
4	Performed CBL-VDL, AND Set 9-5/8" Plug	'SHN	Kuri-2	Flawlessly Executed	SLB
5	Performed Wireline Perforation with 7" Deep Penetrating 12SPF Gun, 7 runs.	'SHN	Kuri-2	Flawlessly Executed	SLB
6	Performed Two Zone Gravel Pack Lower Completion & Intermediate Completion	'SHN	Kuri-2	Flawlessly Executed	SLB
7	Performed 3-1/2"x 3-1/2" Two string Dual (TSD) Upper Completion with Slim Type 5.001" OD	'SHN	Kuri-2	Flawlessly Executed	SLB
8	Gravel Pack Pumping Services	'SHN	Kuri-2	Flawlessly Executed	SLB

### Projects In Pipeline - Noranova

S/N	DESCRIPTION	CLIENT	WELL NAME	STATUS	TECHNICAL PARTNER
1	PROVISION OF COMPLETION SERVICES	OANDO	TBD	Awaiting Contract	SLB
2	PROVISION OF COMPLETION SERVICES	NEPL/ND WESTERN	OML 34	Awaiting Contract	SLB

Diagnostic  
Capabilities

Addresses

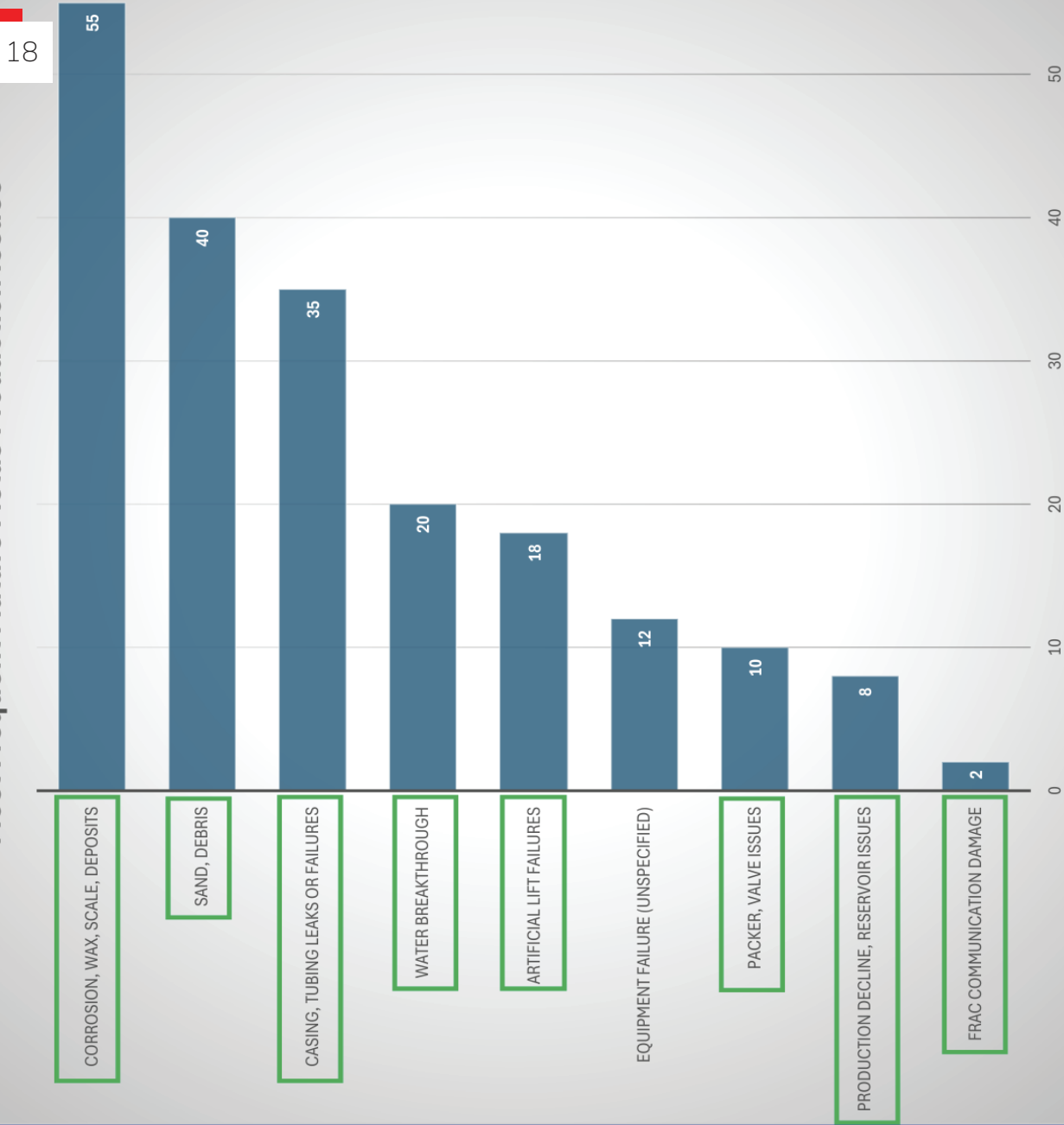
88 %

Of Field  
production  
Issues



## Wireline/Well Intervention Package

### Most Frequent Mature Fields Production Issues



# Wireline/Well Intervention Package

SEPHA ENERGIES

19

## Reveal™

*The next gen Surveillance & Monitoring platform*

*RST & Pulsar / Multi pipe integrity / Leak Detection/ product*

## Epilogue™

*Dual Barrier Evaluation*

## OneLine Cable

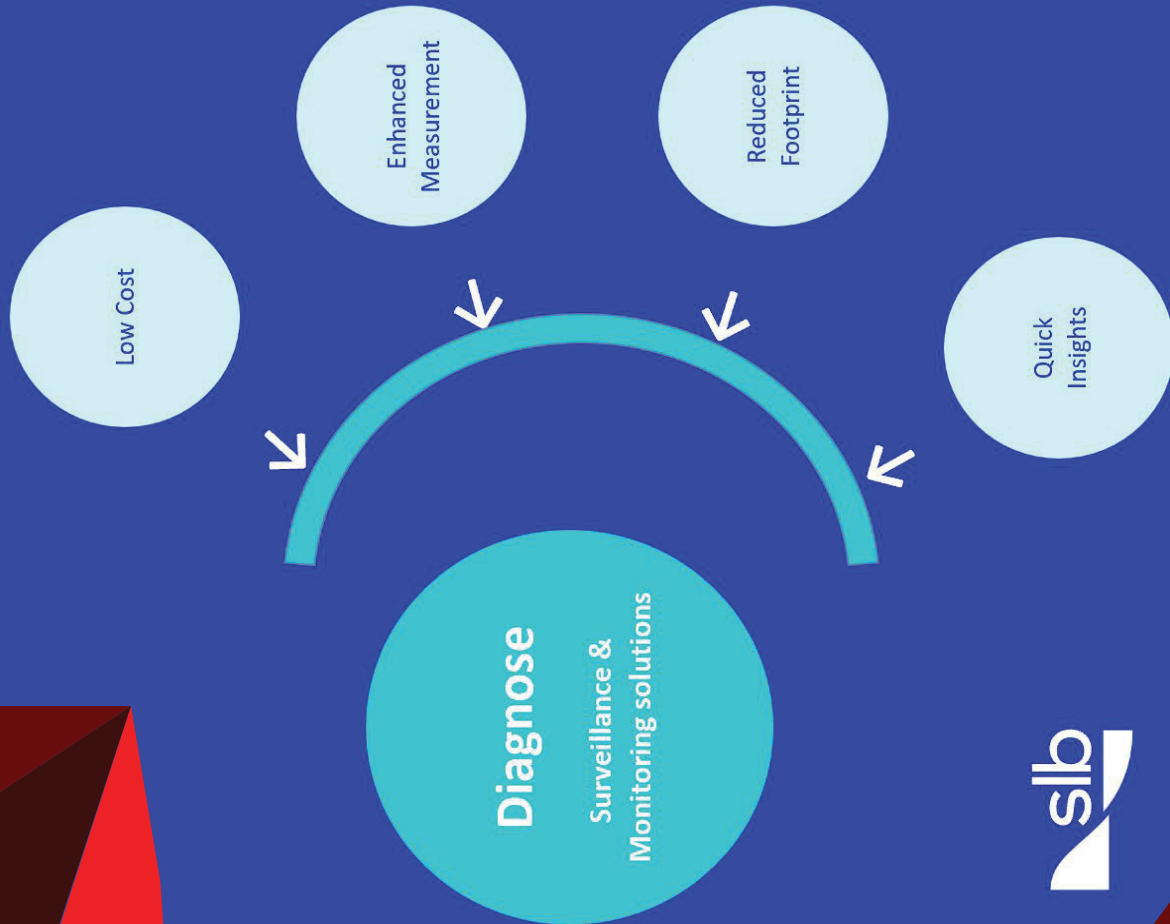
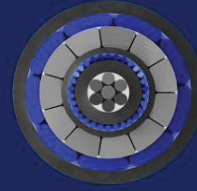
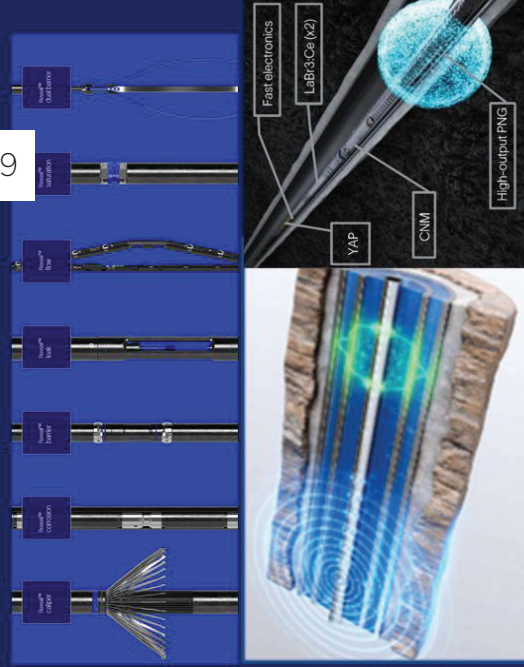
*Extreme-performance multioperational carbon composite cable*

## Optiq Fiber

*Leak Detection  
Flow profiling  
Cross Well Strain Monitoring  
Cluster Efficiency*

## Untethered solutions

*Low-cost solutions*



## Wireline/Well Intervention Package

### Wireline Tools

- ✓ Zone switch with One-trip Cement retainer.
- ✓ Non-explosive plug settings
- ✓ Pipe recovery suits; Electromechanical punch tool, mechanical / Plasma pipe cutter tools.
- ✓ Reservoir Saturation Evaluation Tool.
- ✓ Smart Dumb Bailer Tool.

### Plug and Abandonment (P&A)

- ✓ Wellbore isolation & barrier placement tools: bridge plugs, cement retainers/packers.
- ✓ Cementing Tools.
- ✓ Well intervention/pipe recovery tools: cutters, fishing tools, jarring tools, milling tools.
- ✓ Tubing & conductor recovery tools.



# POSITIONING OUR BUSINESS TO SUCCEED OEMS

## Completion Inventory Plan

### Strategic Approach

- Developing our Engineers through ILT(Instructor- Led -Training) , WBT(Web-Based Training), OJT ( On –the Job Training )

### Inventory Hub for Sub-Saharan Africa

- NCDMB/Nexim Bank equipment financing loan for women entrepreneurs
- Holding Inventory for OEMs and producers to bridge the gap between planning and manufacturing lead times

### Strategic Approach

- Exworks equipment purchase agreements
- Comprehensive training & development programs
- Rental & Service tool, including redress kits and technical services.



## 50+ Modern Vessels Fully Owned by SSC

### CONSTRUCTION / HEAVY LIFTING VESSELS



Chuang Li



Wei Li



Da Li



Qun Li



Ke Li



Ju Li

### DIVING SUPPORT VESSELS / PIPE LAY VESSELS



Shen Qian Hao



Shen Da

### SEMI-SUBMERSIBLE VESSELS



ZR 121



ZR 121

### OCEAN-GOING TUGS / ANCHOR HANDLING TOWING SUPPLY TUGS



De Shen



De Tian



De Jing



De Yuan



De Xun



De Tao



## 460k Hydraulic Worker Unit (HWU)

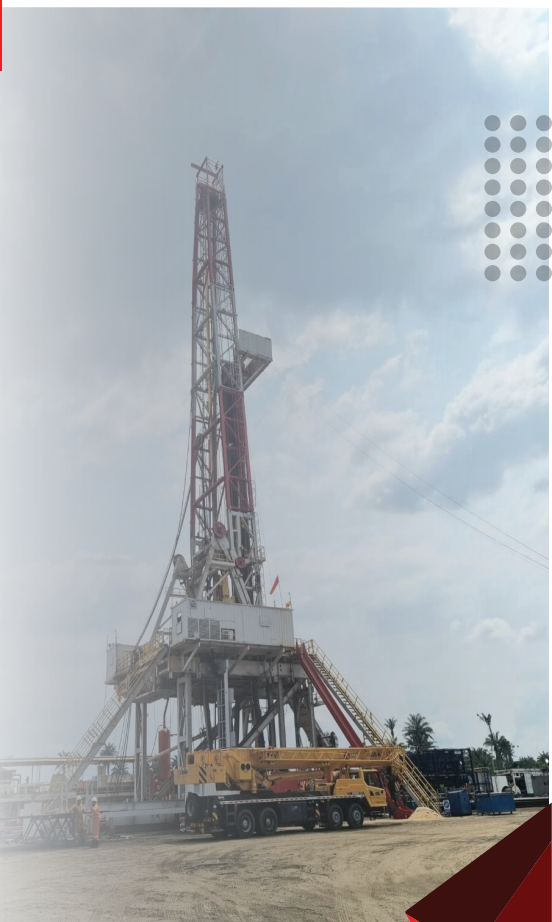
Our 460K Hydraulic Workover Unit (HWU) is a warm-stacked, high-capacity rig designed for demanding well intervention and workover operations up to \*15,000 ft, equipped with 550–600 HP C-18 CAT power, 10K BOP stack, 5K annular with 10K bottom flange, 10K choke & kill manifold, dual HT400 mud pumps (4.5"–6" liners, 10 bpm, 10,000 psi), and delivering 460K pulling / 230K snubbing capacity, 20,000 ft-lbs rotary torque, 1,000 bbl mud storage, and 1,800 L fuel capacity.



## 2000HP VFD Land Drilling Rig

The 2000HP VFD Drilling Rig is a 7000m, heavy-duty, electric-drive land rig equipped with a 4500kN hook load capacity, K-type mast (45.6m), 10.5m slingshot substructure, and a 37½" rotary table. It features a 1600kW drawworks, AC-drive motors (800kW ×2 for drawworks, 800kW for rotary, 1200kW ×3 mud pumps), and a total power package of 5300kW (4×1200kW + 1×500kW).

The rig includes a full 5-stage mud system with 400m<sup>3</sup> tank capacity, supports oil-based mud, and operates in environments from –19°C to +50°C. Designed to API and GB standards (API 4F, 7K, 8C, 16A/16C/16D, Q1, STD 53, etc.), it uses a 6×7 wireline system with Ø38mm drilling line, VFD control, and full well control compliance.



### ✓ Drilling and Completion Advisory Services:

- ✓ We and our partners, at various times and upon client request, provided high-level drilling and completion advisory services to the following companies:
  - ✓ Matpatson Energy Services
  - ✓ Heritage Energy Operational Services Limited (HEOSL)
  - ✓ Energia Limited
  - ✓ Frontier Oil
- We possess extensive industry connections and the capacity to assemble a competent project team, including professionals he has previously collaborated with on multiple projects. His full project management team is also available on request to support turnkey and advisory operations.

### ✓ Drilling and Well Construction Project Management Capability:

- ✓ Drilling & Well construction Project Management
- ✓ Turnkey model drilling project
- ✓ Manpower Solutions
- ✓ Well Intervention operations
- ✓ Drilling Engineering & Operations
- ✓ Well Completions Design And Operations
- ✓ Workover & Re-entry Operations
- ✓ HPHT Operations
- ✓ Drilling and Performance Management
- ✓ Drilling Rig/Support Services, projects
- ✓ Procurement & Supply of drilling and well completions equipment and materials
- ✓ Rental of drilling service tools
- ✓ Project Management (End-to-End)
- ✓ Well Delivery and Operations

## Project Management & Turnkey Services

✓ Industry Experience: Over 37 years in Oil & Gas

### ■ Companies Worked With:

- ✓ Schlumberger
- ✓ Baker Oil Tools
- ✓ Shell Group
- ✓ Heritage Operational Services Ltd
- ✓ Seplat Petroleum Development Company PLC
- ✓ Platform Petroleum Ltd (current role)

### ■ Notable Assignments:

- ✓ Shell International Assignment in UAE (Dubai) as Well Engineering Manager
- ✓ Project Execution Manager for Shell Alternative Funding Project
- ✓ Technical Advisor for Heritage (OML-30)
- ✓ Well Delivery and Operations at Seplat

OFFICE COMPLEX



# SEPHA ENERGIES

## Contact Us



3 Royal Palm Estate, Off Peter Odili Road,  
Port Harcourt, Rivers State, Nigeria.



info@sephaenergies.com



+234-913-846-4024



Sepha Energies



Sepha Energies



Sepha Energies



sepha\_energies\_



[www.sephaenergies.com](http://www.sephaenergies.com)

